

FINE NESS

LAMINATE TRENDS 2017

ABOUT THIS CATALOGUE

It is a new world we're living in, some modern poets called it the new age of enlightenment but we at *Fineness* also sees it as an era of pushing boundaries.

We want our laminates to be the refined symbols of this new world, and so in this limited collection, we've combined our profound manufacturing experience with today's new found understanding in nature, design, and human technology. Consequently, a laminate collection beyond our expectation is born. Among ourselves, we called them the "Ultra-Modern" series.

As always, we are not here to replace your love for woods, stones, metals, leathers, fabrics, or any other earthly materials. We are simply here to show you that through a brave vision and a unique autonomy of the aesthetic process, you now have a more practical, more precise, and more refined laminate collection to work with. So how about taking a leap of faith? And let *Fineness* be the cool new tool that help you display your class in interior design and on any finishing works your heart desire.

**We appreciate your stopping by,
please enjoy our laminate trends 2017.**

LAMINATE REFINED



WOOD

WOOD

**“Environment
& economy**

**are two sides of the same coin.
If we cannot sustain
the environment we cannot
sustain ourselves.”**

Wangari Maathai

High Texture



Dim Teak Allover
SSF 12092

RM
Recommend



Dim Teak Allover
SSF 12092

LM



Light Fumed
SSF 2269

LM



Summer Nelson
SSF 12102

LM



Milltown Nelson
SSF 12101

LM

WOOD

High Texture



Clover Oak
SSF 12086 LM



Clover Oak
SSF 12086 RM



Dark Fumed
SSF 2267 LM



Canyon Oak
SSF 12027 FS

Recommend



Dark chic Milano
SSF 2272 LM



Thunder Maple
SSF 12025 LM



Dark Takoj
SSF 12054 LM



Mineral Ash
SSF 12043 FS



Canyon Monument Oak
SSF 12032 FS

WOOD

Medium Texture



Clover Oak
SSF 2226

BK

Recommend



Dim Teak Allover
SSF 2248

BK



Evergreen Ash
SSF 12047

SS



Evergreen Ash
SSF 12047

QA



Wyoming Maple
SSF 12024

BK



Wood Oak
SSF 12029

BK

Recommend



Ice Cream Wood
SSF 2230

BK

Recommend

WOOD

Medium Texture



Salinas Gray
SSF 2220

BK

Recommend



Frozen Wood
SSF 2233

FS



Elegent Nelson
SSF 2227

BK



Cuban Mahogany
SSF 12018

BK



Juglan Burch
SSF 12084

FS



Lime Abaca
SSF 12037

FS



Planked Wood
SSF 2141

TP

Recommend



Banane Abaca
SSF 12064

FS



Cedar Rich
SSF 12052

QA



Mineral Brown
SSF 12044

FS

WOOD

Smooth Texture



Silver Leone Nut
SSF 2253 TP



Heather Grove Wood
SSF 2246 BK



Baltimore Walnut
SSF 2265 TP



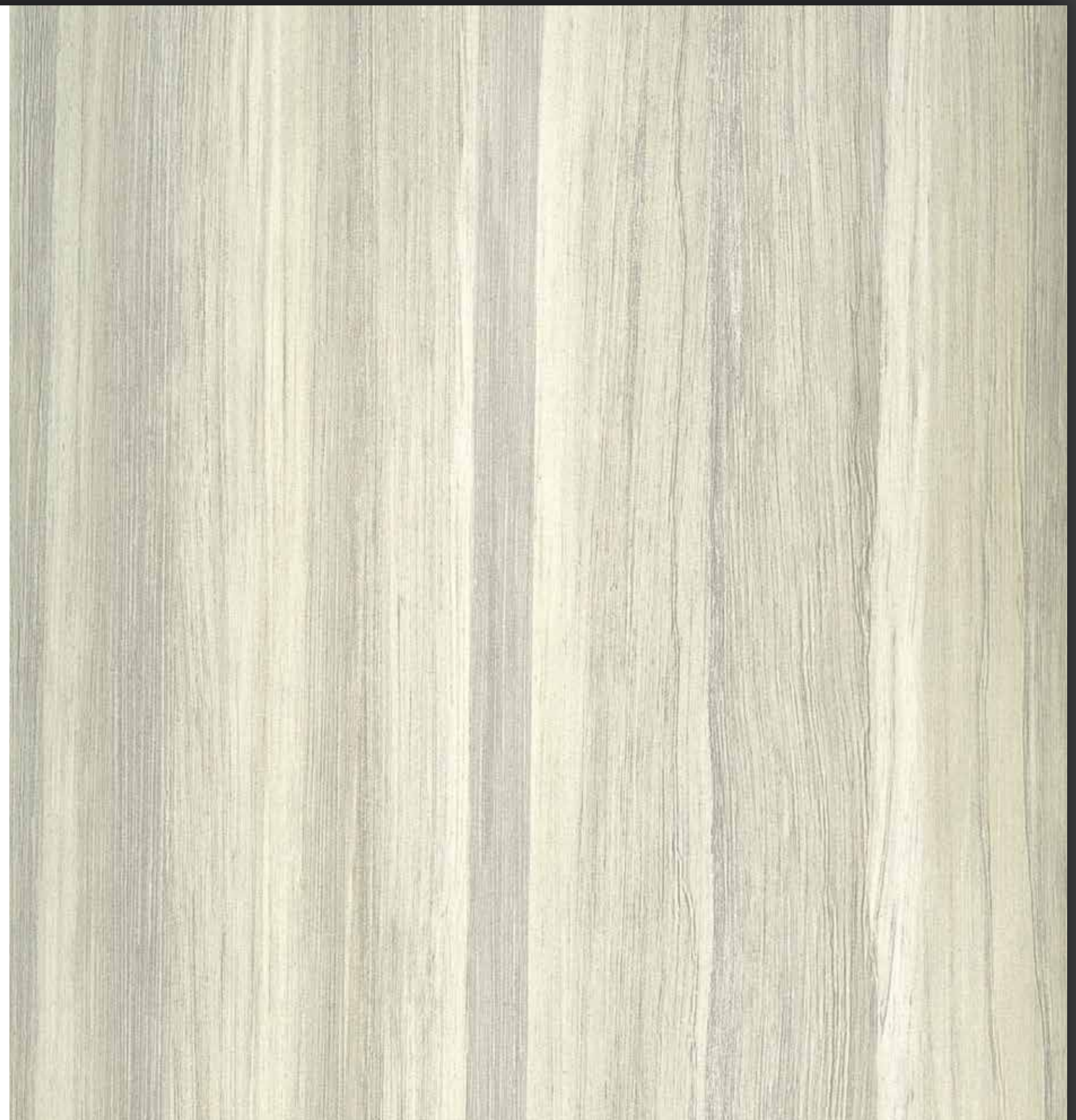
Fierry Bronze
SSF 12056 BK



Blackish Greenhill Nut
SSF 2252 TP



Manhattan Banana Wood
SSF 2247 BK



Twilight Banana Wood
SSF 2245

BK

Recommend

WOOD

Smooth Texture



Wyoming Maple
SSF 7311

QA
Recommend



Ocean Side
SSF 2240 TP



Ocean Side
SSF 2240 BK



Dusty Cabric
SSF 2239 TP



Monk Nelson
SSF 12088 RM



Nutmeg Leather
SSF 2238 TP



Jovenile Walnut
SSF 7703 FS



Milltown Nelson
SSF 2259 QA
Recommend

WOOD

Smooth Texture



Polynesia Dust
SSF 2423 QA



Arctic Rincon Wood
SSF 2254 QA



Summer Nelson
SSF 2260 BK



Dust Teak Allover
SSF 2249 BK
Recommend



Iconic Teak
SSF 2243 TP



Salisbury Oak
SSF 12080 RM



Sunlesh Greenhill Nut
SSF 2251 FS



North Refined Teak
SSF 2419 QA
Recommend

WOOD

Medium Texture



Elegent Nelson
SSF 12087

RM

Recommend



Wedding Cake
SSF 2235

FS



Maribor
SSF 2231

BK



Dark Katthult
SSF 2263

BK



Brown Allover
SSF 2262

QA



Nice Roma
SSF 2232

TP



Dark Oak
SSF 12036

QA



METAL

METAL

**“Men are like
steel.**

**When they lose
their temper,
they lose their worth.”**

Chuck Norris

Smooth Texture



City Metallo
SSF 1439

MH
Recommend



Iron Plate
SSF 1437

MH



Silver
SSF 9598

BRUSH/METAL



Gold
SSF 9585

BRUSH/METAL



Silver Matt
SSF 9580

MATT/METAL

STONE



STONE

“Every block of **stone** has a statue inside,
it is the task of the **sculptor** to discover it.”

Michelangelo

Medium & Smooth Texture



Classico
SSF 1442



Travertino Yoko Ap
SSF 1432



Crema Toast
SSF 1428



Leger Stone
SSF 1431



Bronx
SSF 1430

DM
Recommend

SS

SS

SS

SS

STONE

Medium & Smooth Texture



Mojave
SSF 1444

SS

Recommend



Colosseo Marble
SSF 10005

SS

Recommend



Free Stone
SSF 1429

SS



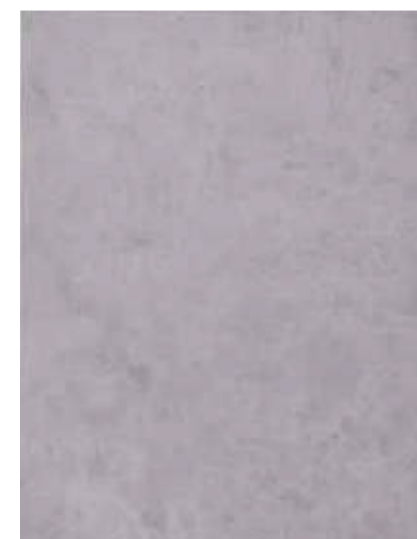
City
SSF 1436

MH



Brooklyn Marble
SSF 10001

SS



Manhattan
SSF 1438

DM



Tivoli Marble
SSF 10002

SS



Jaipur Marble
SSF 1443

SP



GRAPHIC

GRAPHIC

**“Design
creates culture.
Culture shapes values.
Values determine the future.”**

Robert L. Peters

Smooth Texture



Shine Kanvas
SSF 2273

FS

Recommend



Kanvas Wood
SSF 2241

FS



White Kanvas
SSF 2274

SF



Dark Plano
SSF 1414

FS



Light Plano
SSF 1415

FS



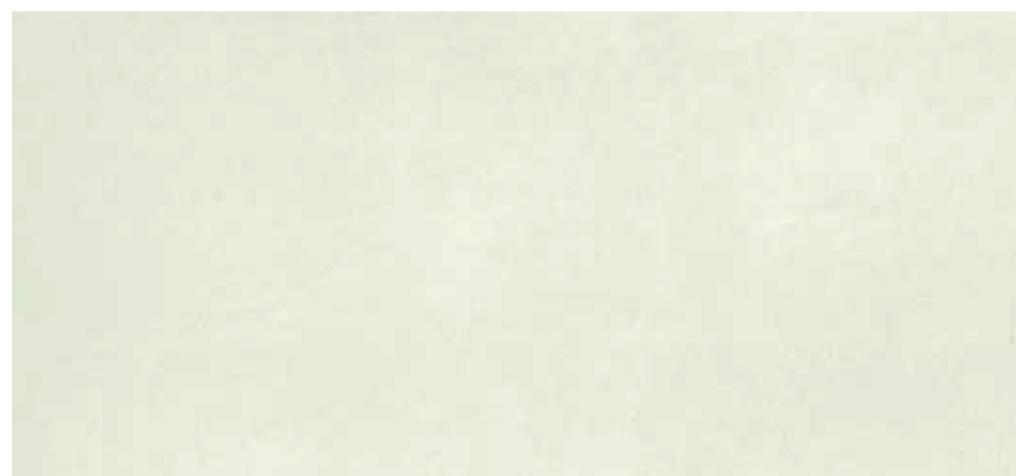
LEATHER & FABRIC

LEATHER & FABRIC

“As a designer,
I like to **work with fabric** that don't bleed.”

Stella McCartney

Medium & Smooth Texture



White Leather
SSF 1413

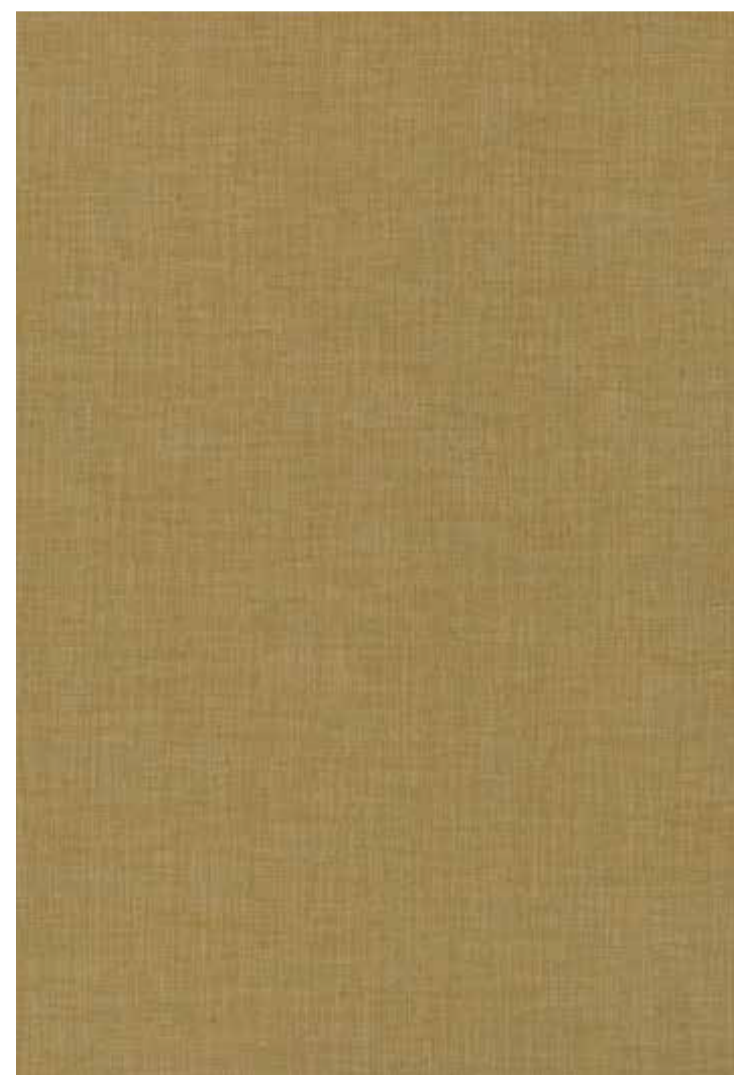
CL



Sweat Birch
SSF 1418

CL

Recommend



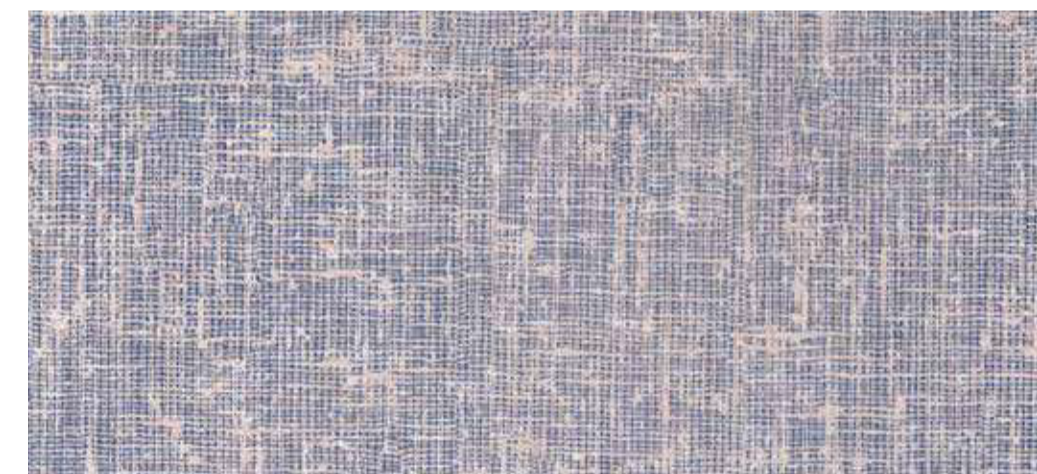
Shiranui
SSF 1435

BC



Rasen
SSF 1433

TT



Rasen
SSF 1434

TT



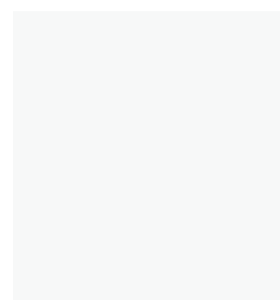
SOLID

SOLID

**“Colour
creates,
enhances, changes,
reveals and establishes
the mood.”**

Kiff Holland

Smooth Texture



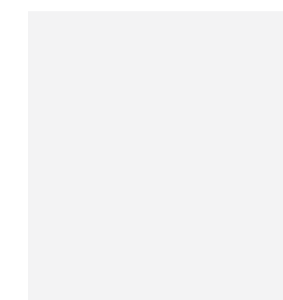
Pure White SD
SSF 8001



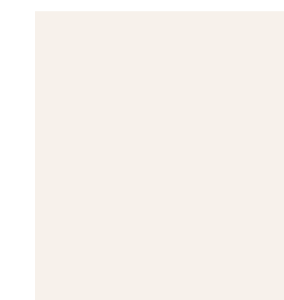
Off White SD
SSF 1020



Evening Off White SD
SSF 1061



Pale Grey SD
SSF 1057



Fruit Green SD
SSF 523



Barley Corn SD
SSF 1050



Tidal Island SD
SSF 1033



Chalk Grey SD
SSF 8121



Alumina Grey SD
SSF 120



Platinum Grey SD
SSF 8106



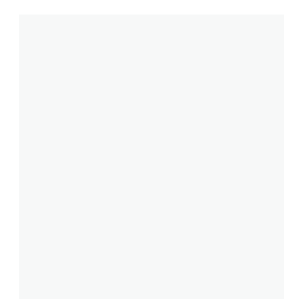
Warm Grey SD
SSF 8117



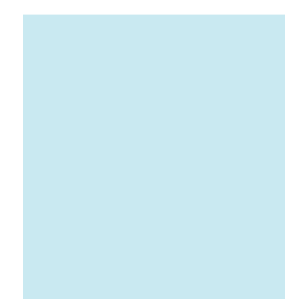
Slate Grey SD
SSF 1014



Black Magic SD
SSF 142



Egg White SD
SSF 1003



Breeze SD
SSF 526



Sky Blue SD
SSF 8403



Flip Blue SD
SSF 8404



Polynesia Green SD
SSF 198

SOLID

Medium & Smooth Texture



Pastel Green SD
SSF 1015



Electric Green SD
SSF 1025



Parrot Green SD
SSF 1059



Hina SD
SSF 8306



Swadeshi Green SD
SSF 195



Emerald SD
SSF 527



Ocean Blue SD
SSF 563



Polar Blue SD
SSF 564



Royal Ink SD
SSF 529



Magic Move SD
SSF 193



Baby Pink SD
SSF 1007



Pink Blossom SD
SSF 570



Garden Pink SD
SSF 8152



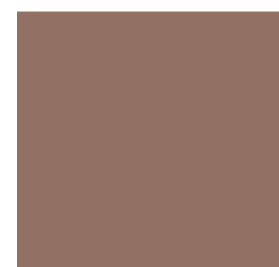
Deep Pink SD
SSF 8321



Yellowish Brown SD
SSF 8221



Copper Brown SD
SSF 8225



Rock Brown SD
SSF 1046



Chamoise Brown SD
SSF 8204



Lemon SD
SSF 1054



Viking Yellow SD
SSF 1027



Golden Yellow SD
SSF 8504



Mango SD
SSF 8521



Orange SD
SSF 8522



Classic Saffron SD
SSF 571



Signal Red SD
SSF 8552



Robinhood Red SD
SSF 572



Blood Red SD
SSF 530



Dark Chocolate SD
SSF 539



Charcoal Grey SD
SSF 1049

CORE



CORE

“Simplicity

**is the ultimate form of
sophistication.”**

Leonarde Da Vinci

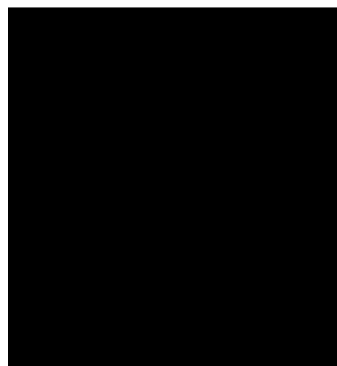
Smooth Texture



Glacia White
SSF 5003 MATT



Blood Red
SSF 5554 MATT



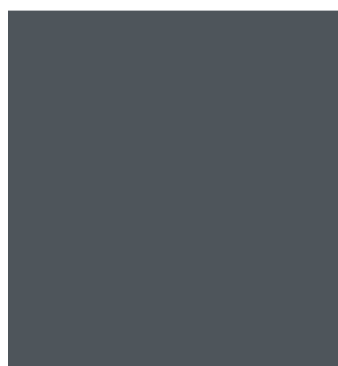
Ultimate Black
SSF 5142 MATT



Golden Yellow
SSF 5504 MATT



California Blue
SSF 5422 MATT



City Shadow
SSF 5109 MATT



Glacia White
SSF 5003 HG



Blood Red
SSF 5554 HG



Ultimate Black
SSF 5142 HG



Golden Yellow
SSF 5504 HG



California Blue
SSF 5422 HG



City Shadow
SSF 5109 HG

PRODUCT INFORMATION

Technical Data Sheet

Sl. NO.	PROPERTIES	UNIT	SPECIFIED VALUE		FINENESS TYPICAL VALUES
			IS 2046-1995	BS EN 438	
1	Thickness	mm	1 ± 0.10	1 ± 0.10	1 ± 0.10
2	Resistance to immersion in boiling water				
	a) Mass increase	% , Max.	10	10	7.5
	b) Thickness increase	% , Max.	12	12	8.5
	c) Appearance	Grade, Min.	4	4	4
3	Resistance to surface wear	Rev. Min.	350	350	380
4	Resistance to dry heat at 180° C				
	a) Appearance : Gloss	Grade, Min.	3	3	4
	b) Appearance : Others	Grade, Min.	4	4	5
5	Dimensional Stability at 20° C	(L)% , Max. (T)% , Max.	0.55 1.025	0.55 1.025	0.40 0.85
6	Dimensional Stability at elevated temperature	(L)% , Max. (T)% , Max.	0.375 0.625	0.375 0.625	0.25 0.50
7	Resistance to impact by small diameter ball	N, Min.	20	20	30
8	Resistance to scatching	N, Min.	2	2	2.5
9	Resistance to staining :				
	a) Group 1 & 2	Grade, Min.	5	5	5
	b) Group 3 & 4	Grade, Min.	4	4	5
10	Resistance to cigarette burns	Grade, Min.	3	3	4
11	Resistance to cracking	Grade, Min.	4	4	5
12	Resistance to steam	Grade, Min.	4	4	5
13	Resistance to colour change in				
	a) Xenon arc light	Grade, Min.	6	6	6
	b) Enclosed Carbon Arc Light	Grade, Min.	5	5	5

Refined Technology

All Fineness laminates are made using state of the art technology that encompass worldwide standards on safety and environmental sustainability.

Certification



Availability

- Unless mentioned otherwise, the designs would be available in suede finish and a standard size of 1220 mm × 2440 mm (4' X 8')
- Upon special request and after confirmation from our factory, other finishes, namely matte and gloss, can be made available.
- The * symbol is meant for designs that are also available in the size of 1300 mm × 3050 mm.
- Fineness Laminates are also available in post-forming format.
- We recommend metal laminates only for vertical application.
- The thickness of our laminates for the domestic market are 1.0 mm and 1.5 mm. For the export market, the thickness varies with requirement.

Laminate User Guide

- Before bonding, always ensure that you level the surface and free it from oil, moisture, grease, dust and other contaminants.
- The bond will become weaker if you add water to any adhesive.
- Do not cut at 90° angle to avoid cracks. And round off corners after fixing the laminate.
- Once tackiness is achieved (it may take 20-40 minutes, depending on the prevalent atmospheric conditions on the site), the laminate should be placed on the surface, accurately aligned and pressed down firmly to ensure proper bonding.
- During alignment and pressing, no air gap or air bubbles should remain between the surface and the laminate.
- Keep the pasted portion under sufficient pressure for a period of 6 to 12 hours, for proper bonding. The rate of drying may vary according to the surface and atmosphere.
- Use soft soap solution for cleaning.

Laminate Care Guide

- Acidic or abrasive cleaners can damage laminate surfaces; do not use them.
- Drain cleaners containing lye will permanently damage the laminate surface. If you spill a drain cleaner, wipe it up immediately and rinse several times with water.
- Hair, textile and food dyes can cause permanent stains. If dye should happen to spill, wipe it up immediately with dishwashing detergent or an all-purpose cleaner.
- Never place pots or dishes directly from the oven or burner on an unprotected laminate surface; such extreme heat can cause cracking or blistering.
- Do not work with oven cleaners on an unprotected countertop. Wipe spills away promptly and rinse several times with water.
- Rust removers contain harsh chemicals which will quickly cause permanent damage. If a spill occurs, wipe off all residue immediately, wash thoroughly with soapy water and rinse several times.

Our Warranty

At no cost to the Original Purchaser, we will provide, at its option, repair or replacement of the warranted product.

This warranty does not cover fabrication or installation, is not transferable and is extended only to, and may only be enforced by, the Original Purchaser. It is expressly conditioned upon submission of proof of purchase.

WHAT IS EXCLUDED

This warranty shall not apply to damage arising from any of the following:

- Accidents, abuse or misuse
- Fabrication, installation, alterations or repairs
- Exposure to extreme temperature changes
- Exposure to harsh or corrosive chemicals and cleaners
- Excessive weight placed on countertop
- Structural support or movement
- Improperly installed, used and/or maintained appliances
- Acts of nature

FINE
NESS

CONTACT US

FINENESS LAMINATES

Sales Office : 29/14 Moo 6 Lumlukka Rd.,
T.Kukot, A.Lumlukka, Pratumtani 12130



02 191 0696



02 191 0687



sales@finenesslam.com



www.finenesslam.com



finenesslamine



finenesslam